

Net Tool Optimizer® (NTO) 6212

Network Visibility and Inline Load Balancing Appliance with Application and Threat Intelligence (ATI)



Ixia's Net Tool Optimizer® (NTO) 6212 is the industry's only network visibility appliance with integrated deep packet inspection (DPI), SSL decryption and enhanced NetFlow generation. Now dynamic data centers can keep pace with exploding data and traffic on the network. IT/DevOps can uniquely optimize the cost of current inline and monitoring deployments by quickly identifying security threats and application trends early and transferring only the precise information needed to the best analysis tools.

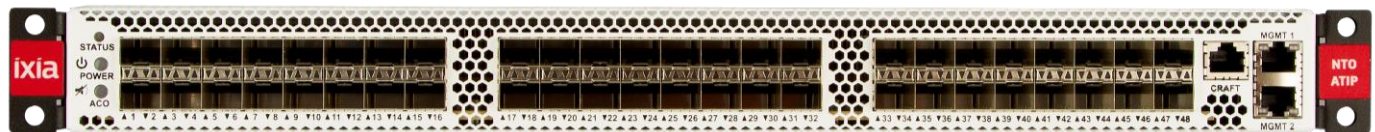
Key capabilities include:

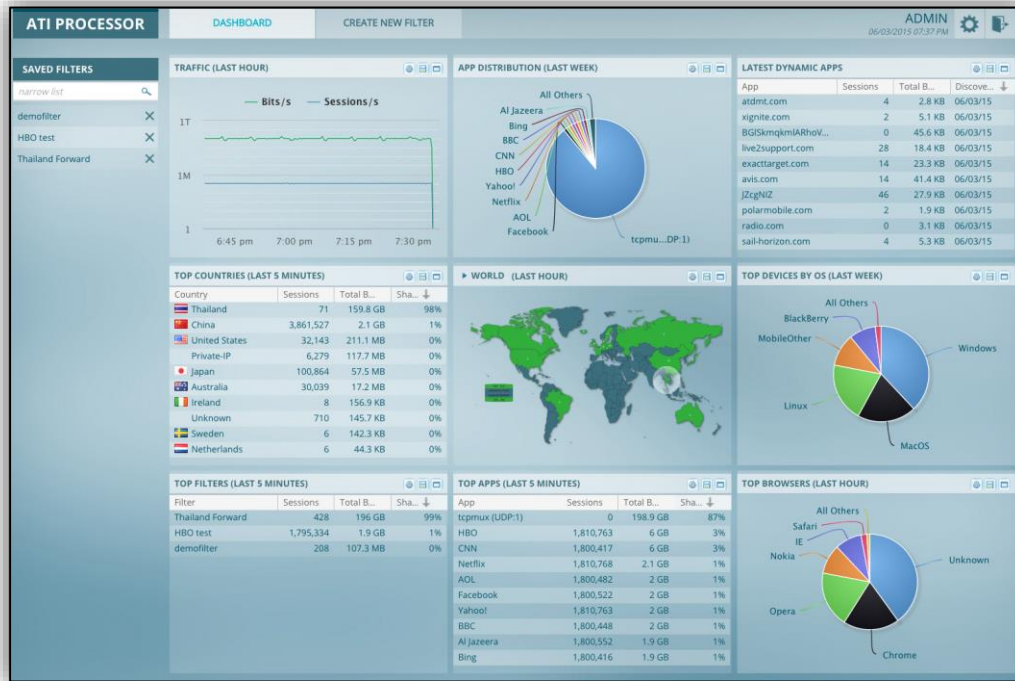
- Integrated DPI identifies applications, application events, geolocation and devices by content rather than layer 4 port numbers so that network usage is fully visible and application-specific trends and unusual patterns can be easily identified and quickly isolated.
- Enriched NetFlow generates an enhanced set of statistics about network flows such as device types, operating systems, browsers, SSL statistics and geolocations of users so that IT teams get more insight into network events and network performance is improved by offloading NetFlow generation from routers.
- SSL decryption enables NetOps to tap, decrypt, and analyze encrypted traffic to identify secured application behaviors without any external hardware.
- Industry-leading user interface and patented filter compiler makes configuration straightforward for both inline and out-of-band topologies so that users to focus their efforts on their security and analysis tools.
- The **Application and Threat Intelligence (ATI)** program simplifies budgeting and eliminates the frustration of needing to purchase every time a new feature is needed. ATI includes all existing advanced features and provides immediate access to any new features when they are released.

The NTO 6212 is an ideal solution for enterprise data centers with increased bandwidth requirements emerging from higher processor density, virtualization, and SAN.

Key Features

- Provides dynamic and signature-based application detection, filtering, and monitoring
- SSL decryption capability with stateful decrypted output
- Combines traditional NTO capabilities with application awareness and context
- Enables tracking of applications by bandwidth, session, and geography
- Supports generation of NetFlow v9 and 10 and IPFIX data and supports up to 10 NetFlow collectors
- Delivers frequent updates via ATI subscription
- Offers compact, high-density form factor options with AC or DC power





Port Flexibility

- 48 ports of 10GbE/1GbE SFP+
- All ports are bidirectional & fully non-blocking
- Full line rate across all ports with even filtering enabled
- Extensive packet filtering capability including:
 - Layer 2: MAC, VLAN, MPLS, or Ethertype
 - Layer 3: IPv4 or IPv6, source / dest / session, DSCP, IP Protocol
 - Layer 4: Port Number, TCP Control
- Suitable for both inline and out-of-band deployments
- Supported encryption ciphers: 3DES, RC4, AES, SHA1/521/384/256/224, and MD5

Inline-Specific Features

- Supports service chaining, load balancing groups, and combined topologies
- Heartbeat support for detecting monitoring and security tool failures and automatically recovering
 - Single stage or multi-stage heartbeats are supported
- Two failure recovery modes
 - Rebalance sessions among all active tools
 - Transition all active sessions from a failed tool to a dedicated standby tool

Management

- SNMP v1, v2, v3 support
- Local, RADIUS, and TACACS+ support (members and groups)
- Granular access control features
- Event monitoring & logging
- Syslog
- IT Automation control with RESTful API

Power for NTO 6212

	AC Power	DC Power
Dual Power Supplies	✓	✓
Hot swappable	✓	✓
Operating input voltage	100 to 240 VAC	40 to 72 VDC
Nominal current	2.5A @ 100 VAC, 1A @ 240 VAC	4.15A @ 53 VDC
Max. operating input current	4A @ 100 VAC	8A @ 40 VDC
Heat/power dissipation for module at 100% traffic load	250 W / 853 BTU/hour	

Compliance

- RoHS, IEC-60950-1:2005, UL60950-1 and CSA C22.2 No. 60950-1

Physical Specifications

- 1RU high 19" rack mountable chassis
- Dimensions: 17.5W x 28.5L x 1.75H (inches) / 44.5W x 72.4L x 4.5H (cm)
- Weight: 33.7lb / 15.3 kg

Operational Environment

Temperature

- Operating: 5°C to 40°C
- Short-term*: -5°C to 55°C (*not to exceed 96 consecutive hours)
- Short-term* with fan failure: -5°C to 40°C (*not to exceed 96 consecutive hours)

Humidity

- Operating: 5% to 85%, (non-condensing)
- Short-term*: 5% to 90% (non-condensing, *not to exceed 96 hours)

Ordering Information

The NTO 6212 can be purchased as either a solution or by combining individual components.

Solution Ordering Information

Solutions include NTO 6212 hardware with 48 physical SFP/SFP+ ports and licenses for system use. Transceivers are not included. Compatible transceivers are available and may be purchased from Ixia. All solutions are configured with dual AC power supplies. . Additional licenses may be added to a system to enable additional ports or Application and Threat Intelligence (LIC-7300-ATI).

Solution Part Number	HW Ports Included	Ports Licensed for 1G Use	Ports Licensed for 10G	Includes 1 year ATI subscriptio
SYS-6212-ATP-161G810G	48	16	8	
SYS-6212-ATP-161G810G-ATI	48	16	8	✓
SYS-6212-ATP-2410G	48		24	
SYS-6212-ATP-4810G	48		48	

Hardware Component Ordering Information

Hardware part numbers include a one rack unit, 48-port Application and Threat Intelligence Processor interface that requires activation license for ports and license for an ATI subscription. Does not include transceivers. Compatible transceivers are available and may be purchased from Ixia.

Hardware Component Part Number	Power Supply Type
SYS-6212-ATP	Dual AC
SYS-6212D-ATP	Dual DC

License Ordering Information

Software licenses can be enabled on any of the NTO 6212 hardware component or solutions.

Hardware Component Part Number	Description
LIC-P6212-X24D	24 port perpetual license for 1G/10G operation
LIC-P6212-X48D	48 port perpetual license for 1G/10G operation
LIC-7300-ATI	ATI (Application and Threat Intelligence) Processor One-Year License. Enables application usage and software updates. Does not enable ports. Application will not function without a valid license installed.

Accessories

The following items may be purchased with the system depending upon user requirements.

Accessory Part Number	Description
MOD-6212-ACPSU	Field replaceable AC power supply
MOD-6212-DCPSU	Field replaceable DC power supply
MOD-6212-FANMOD	Field replaceable fan module. The 6212 chassis is configured with two fan modules.