

Ixia Flex Tap™



The Ixia Flex Tap™ provide reliable continuous visibility of 100% of network traffic to support performance and security with no network performance degradation or disruption.

Key Benefits:

- Low insertion loss – minimize impact on data flows
- Flex Tap is fully passive – monitoring infrastructure does not impact network availability
- Does not modify traffic – tools see real copies of the packets from the network
- High density – Save valuable rack real estate
- Cost effective – avoid costly expenses managing SPAN ports

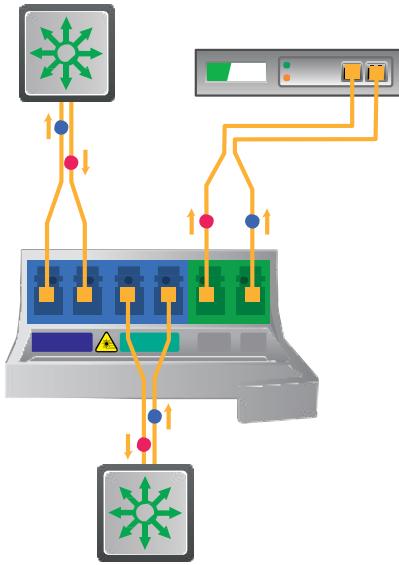
Flex Taps are Flexible and scalable, each Tap in the family is modular, can supports speeds up to 100G, and is 100 percent passive. Flex Taps are available in multimode and single mode fiber varieties with split ratios ranging from 50/50 up to 90/10. Depending on the model, the Flex Tap is available with either LC or MTP (MPO) connectors.

The design of the Flex Tap is optimized and tested for high-performance fiber networks ranging from 1G to 100G. Flex Taps are deployed at any inline connection on the network, therefore no additional overhead or management burden is added to the network devices to copy traffic for the monitoring/security infrastructure. The Flex Tap is compatible with all major manufacturers' monitoring devices, including protocol analyzers, probes, and intrusion detection systems, and is protocol agnostic.

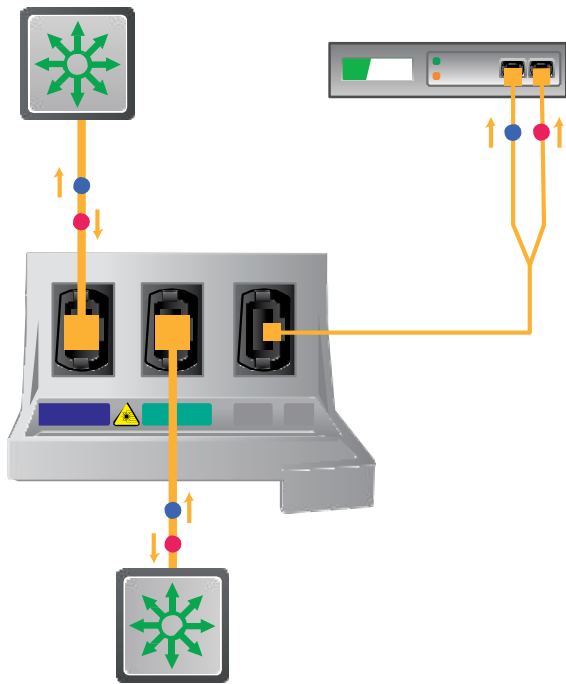


Key Features

- Highly reliable fiber optic Tap technology
- Deploy up to 24 Taps in 1U
- Supports network speeds from 1G to 100G
- Available in multimode and single mode fiber models
- Cisco 40G BiDi Tap model available
- Compatible with all protocols and monitoring devices
- Passes all full-duplex traffic (including errors) from all layers
- Non-disruptive and transparent
- 40G MTP model can be used as one 40G tap or 4 x 10G taps
- 100G MTP model can be used as one 100G tap or 12 x 10G taps
- Requires no power and does not have an IP address, providing safety from remote attacks
- Black and tan LC connectors denote multimode fiber for network monitoring
- Color coded in blue and green for easy port monitoring on LC connectors in single mode fiber
- 40G and 100G Multimode MTP models include monitor port Y-Cable



LC Tap Deployment



MTP Tap Deployment

Specifications		
Operating	<ul style="list-style-type: none"> • Operating Temperature: 0° to 40°C • Storage Temperature: -10° to 70°C • Relative Humidity: 10% min, 95% max, non-condensing 	
Mechanical	<ul style="list-style-type: none"> • Rack Dimensions: 1.7" High x 8.4" Deep x 19" Wide 	
Certifications	<ul style="list-style-type: none"> • Fully RoHS-compliant • Regulatory Certifications: UL, CE • MTP Regulatory Certifications: FCC, ICES , VCCI, EN55022, CISPR22, AS/NZS CISPR 22, EN55024, CISPR24 	
LC Models		
	LC Models	Cisco BiDi Model
Mechanical	<ul style="list-style-type: none"> • 1.6" High x 7.8" Deep x 0.7" Wide 	<ul style="list-style-type: none"> • 1.6" High x 10.1" Deep x 1.3" Wide
Fiber Specs	Multimode: <ul style="list-style-type: none"> • 62.5/125µm; 850nm • 50/125µm; 850nm 	Single Mode: <ul style="list-style-type: none"> • 8.5/125µm; 1310nm/1550nm
Connectors	<ul style="list-style-type: none"> • Network Ports: 2 x Duplex LC • Monitoring Ports: 1 x Duplex LC 	<ul style="list-style-type: none"> • Network Ports: 2 x Duplex LC • Monitoring Ports: 2 x Duplex LC
MTP Models		
Mechanical	<ul style="list-style-type: none"> • 1.6" High x 10.1" Deep x 1.3" Wide 	
Fiber Specs	<ul style="list-style-type: none"> • 50/125µm OM4; 850nm 	
Connectors	<ul style="list-style-type: none"> • Network Ports: 2 x MTP (MPO); 12 Fiber or 24 Fiber • Monitoring Ports: 1 x MTP (MPO); 12 Fiber or 24 Fiber 	

Insertion Loss (Network / Monitor)					
	50/50	60/40	70/30	80/20	90/10
1/10/40/100G SM	3.7db /3.7db	2.8 dB/ 4.8 dB	2.0 dB/ 6.1 dB	1.3 dB/ 8.0 dB	0.8 dB/ 12.0 dB
1G MM	4.5 dB/ 4.5 dB	3.1 dB / 5.1 dB	2.4 dB / 6.3 dB	1.8 dB/ 8.1 dB	1.3 dB / 11.5 dB
10G MM	3.9 dB / 3.9 dB	2.9 DB / 4.9 DB	2.2 dB / 6.1 dB	1.6 DB / 7.9 dB	-
40G MM BiDi	4.1 dB / 4.1 dB	-	-	-	-
40G MM	4.4 dB / 4.4 dB	-	2.6 dB / 6.6 dB	-	-
100G MM	4.4 dB / 4.4 dB	-	2.6 dB / 6.6 dB	-	-

Product Ordering Information

Part Numbers					
	50/50	60/40	70/30	80/20	90/10
LC 1G – 100G SM	TP-100-LR-85-50	TP-100-LR-85-60	TP-100-LR-85-70	TP-100-LR-85-80	TP-100-LR-85-90
LC 1G MM – 62.5	TP-1-SX-62-50	TP-1-SX-62-60	TP-1-SX-62-70	TP-1-SX-62-80	TP-1-SX-62-90
LC 1G MM – 50	TP-1-SX-50-50	TP-1-SX-50-60	TP-1-SX-50-70	TP-1-SX-50-80	TP-1-SX-50-90
LC 10G MM – 50	TPX-10-SR-50-50	TPX-10-SR-50-60	TPX-10-SR-50-70	TPX-10-SR-50-80	-
40G BiDi	TPX-40-SR-50-50-BD	-	-	-	-
MTP 40G MM	TPX-40-SR-50-50-MTP	-	TPX-40-SR-50-70-MTP	-	-
MTP 100G MM	TPX-100-SR-50-50-MTP	-	TPX-100-SR-50-70-MTP	-	-
16 SM Tap Bundle	TP-PACK-16-SM50	-	TP-PACK-16-SM70	-	-
16 MM Tap Bundle	TP-PACK-16-MM50	-	TP-PACK-16-MM70	-	-
24 SM Tap Bundle	TP-PACK-24-SM50	-	TP-PACK-24-SM70	-	-
24 MM Tap Bundle	TP-PACK-24-MM50	-	TP-PACK-24-MM70	-	-
Rack Mount					
Rack Mount	RK-FLEX-24		Spacer Unit	RK-FLEX-SPACER	

Cable Kits:

705-0013-001

Cable Kit, Cable Assembly, LC/LC, 1G/10G, Multimode, 62.5µm

705-0014-001

Cable Kit, Cable Assembly, LC/LC, 1G/10G/40G/100G, Single Mode, 8.5µm

705-0027-001

Cable Kit, Cable Assembly, MTP/ MTP, Multimode, OM4, 50µm

CKT-LC-LC-50-OM4

Cable Kit, 1G/10G, 2LC and 1Y-Cable, 50µm, OM4

CKT-MTP-4LC-50-OM4

Cable Kit, Breakout, 40G, MTP to 4 LCs, 50µm, OM4

CKT-MTP-12LC-50-OM4

Cable Kit, Breakout, 100G, MTP to 12 LCs, 50µm, OM4